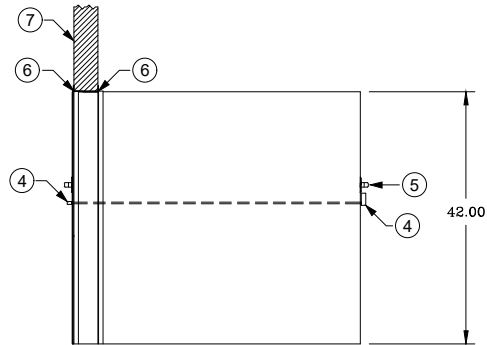
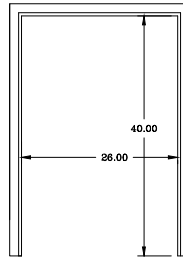


ELEVATION "B"



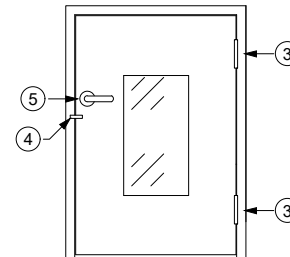
ELEVATION "A"

DOOR NOT SHOWN
TRIM NOT SHOWN



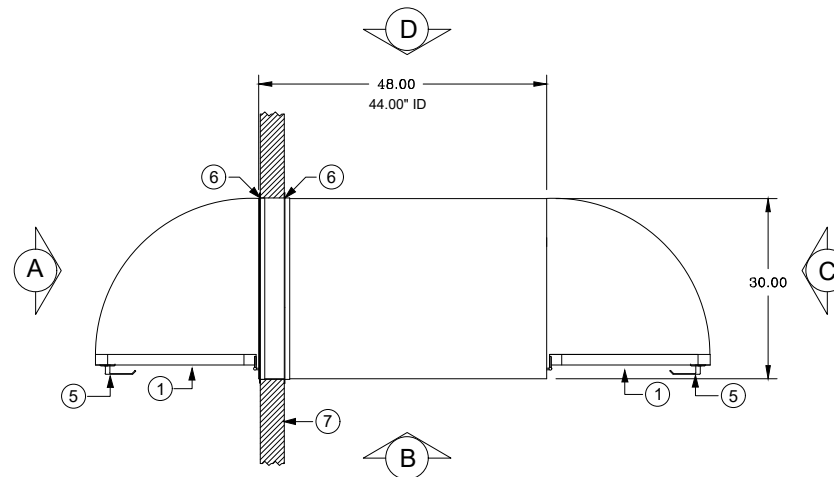
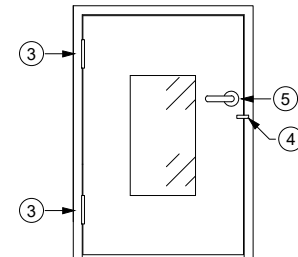
ELEVATION "A"

DOOR SHOWN
TRIM NOT SHOWN



ELEVATION "C"

DOOR SHOWN
TRIM NOT SHOWN



LEGEND

- 1 = 304 STAINLESS STEEL DOOR WITH 0.25\" TEMPERED GLASS VISION PANEL
2 = PEMKO S88BL GASKET SEAL
3 = 304 STAINLESS STEEL BUTT HINGE
4 = POLISHED ALUMINUM INTERLOCK LEVER
5 = 304 STAINLESS STEEL DOOR LATCH
6 = 1.5\" x 1.5\" 316 STAINLESS STEEL ANGLE WITH A #4 BRUSHED FINISH
7 = EXISTING WALL

NOTES:

1. PASS THRU IS CONSTRUCTED OF A DOUBLE WALL 304 STAINLESS STEEL WITH A #4 BRUSHED FINISH
2. TRIM ANGLE IS SHIPPED LOOSE TO ALLOW FLEXIBILITY OF INSTALLATION
3. THE PASS THRU HAS MECHANICAL INTERLOCKS
4. WALL CUT OUT IS 5/8\" LARGER THAN THE OUTSIDE DIMENSIONS OF THE PASS THRU
5. THE I.D. DIMENSION SHOWN ON THE DRAWING REFLECTS THE CLEAR DOOR OPENING
6. ALL SEAMS HAVE A CONTINUOUS WELD AND ARE GROUND SMOOTH TO MATCH THE #4 FINISH
7. THE PASS THRU DOES NOT HAVE A FLOOR, IT USES THE EXISTING FLOOR.

☐ APPROVED
☐ APPROVED AS NOTED
☐ REVISE AND RESUBMIT

BY: _____

DATE: _____



PO Box 427
Rancho Cucamonga, CA 91729-0427
Voice: (800) 913-0054
Fax: (909) 483-1801

DATE:	JOB#:	SERIAL#:	TITLE: CP304842DWSS
SHEET: 1 of 1	SCALE: 3/8\" = 1'-0\"	PROJECT:	